

HOME COLLECTION

2021



AUDIO SOLUTIONS
HANDCRAFTED IN FRANCE

For more than four decades, Focal has created speaker drivers and high-end loudspeakers that deliver a unique sound. Our brand values are innovation and performance; excellence and pleasure. We are globally renowned for our exclusive technologies. The result of this technological heritage is class-leading products offering a natural, authentic performance, imbued with clarity and power. With our collection of acoustic loudspeakers, we bring you excellent listening quality, both in stereo and Home Cinema set ups, through solutions with an exceptional design.



01.
UTOPIA

7

02.
SOPRA

17



03.
KANTA

23



04.
ARIA

29

05.
CHORA

35



06.
SUBWOOFERS

41

07.
ASTRAL 16

45



01. UTOPIA

The legend continues

The embodiment of Focal excellence, the Utopia III Evo line is distinguished by its incredible silhouette, cutting-edge, exclusive technology, finishes inspired by the luxury car industry and, of course, the unrivalled listening experience they deliver. They are also home to the best components of their generation, like their cabling that is manufactured in France. Utopia is an icon, and still streets ahead of the rest.





'W' sandwich cone



Pure Beryllium tweeter



Focus Time



Large laminar vent



Power Flower™ technology



TMD® surround





GRANDE UTOPIA EM EVO

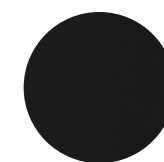
The ultimate sound

Grande Utopia has left an indelible mark with each generation; it is Focal's most successful concept. With its exceptional performance and unique style, it is no longer simply a monument to technology, it is also a sound sculpture. Each speaker driver is housed inside a separate box. These boxes make up the spectacular spinal column of the loudspeaker and can be tilted by a dedicated handle. This adjustable 'Focus Time' function means you can achieve an absolutely perfect sound image based on the configuration of your room.

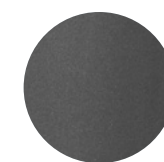
HANDCRAFTED
IN FRANCE



Carrara
White



Black
Lacquer



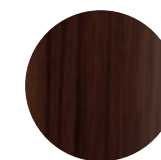
Ash
Grey



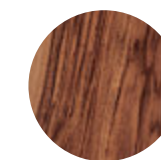
Metallic
Blue



British Racing
Green



Noyer
Foncé



Noyer
Naturel



GRANDE UTOPIA EM EVO

STELLA UTOPIA EM EVO

Type	4-way bass-reflex floorstanding loudspeaker	3-way bass-reflex floorstanding loudspeaker
Drivers	<ul style="list-style-type: none"> • Electro-Magnetic 16" (40cm) 'W' Woofer • Multiferrite 11" (27cm) 'W' Low-Mid Woofer • 2 x 6½" (16.5cm) 'W' Midrange Power Flower™ with TMD® suspension and NIC motor • 1" (27mm) IAL2 pure Beryllium inverted dome tweeter 	<ul style="list-style-type: none"> • Electro-Magnetic 13" (33cm) 'W' Woofer • 2 x 6½" (16.5cm) 'W' Midrange Power Flower™ with TMD® suspension and NIC motor • 1" (27mm) IAL2 pure Beryllium inverted dome tweeter
Frequency response	18Hz - 40kHz	22Hz - 40kHz
Low frequency point (-6dB)	14Hz	18Hz
Crossover frequency	80 / 220 / 2,300Hz	230 / 2,200Hz
Sensitivity (2.83V/1 m)	94dB	94dB
Nominal impedance	8Ω (min 3Ω)	8Ω (min 2.8Ω)
Recommended amplifier power	50 - 1,500W	50 - 1,000W
Dimensions (HxWxD)	77½ x 25¾ x 34½" (201 x 65.4 x 88cm)	61¾ x 21¼ x 32¾" (155.8 x 55.3 x 83cm)
Net weight (by unit)	584lbs (265kg)	375lbs (170kg)
Finishes		

MAESTRO UTOPIA EVO

SCALA UTOPIA EVO

Type	3-way bass-reflex floorstanding loudspeaker	3-way bass-reflex floorstanding loudspeaker
Drivers	<ul style="list-style-type: none"> • 11" (27cm) 'W' Woofer with a Magnetic Damping System (MDS) • 11" (27cm) 'W' Woofer Power Flower™ • 6½" (16,5cm) 'W' Midrange with TMD® suspension and NIC motor • 1" (27mm) IAL2 pure Beryllium inverted dome tweeter 	<ul style="list-style-type: none"> • 11" (27cm) 'W' Woofer Power Flower™ • 6½" (16,5cm) 'W' Midrange with TMD® suspension and NIC motor • 1" (27mm) IAL2 pure Beryllium inverted dome tweeter
Frequency response	25Hz - 40kHz	27Hz - 40kHz
Low frequency point (-6dB)	21Hz	24Hz
Crossover frequency	280 / 2,200Hz	220 / 2,400Hz
Sensitivity (2.83V/1 m)	93dB	92dB
Nominal impedance	8Ω (min 3.1Ω)	8Ω (min 3.2Ω)
Recommended amplifier power	50 - 600W	50 - 500W
Dimensions (HxWxD)	57½ x 17½ x 30¼" (147 x 45.5 x 77cm)	(49½ x 15½ x 26¾") 124.7 x 39.3 x 67cm
Net weight (by unit)	256lbs (116kg)	187lbs (85kg)
Finishes		



**DIABLO UTOPIA
COLOUR EVO**

Type	2-way bass-reflex compact bookshelf loudspeaker	VIVA/VIVA CENTER UTOPIA COLOUR EVO	3-way LCR bass-reflex loudspeaker
Drivers	<ul style="list-style-type: none"> • 6½" (16.5cm) 'W' Mid-Bass Power Flower™ • 1" (27mm) IAL2 pure Beryllium inverted dome tweeter 	<ul style="list-style-type: none"> • 2 x 8" (21cm) 'W' Woofers • 6½" (16.5cm) 'W' Midrange Power Flower™ • 1" (27mm) IAL2 pure Beryllium inverted dome tweeter 	
Frequency response	44Hz - 40kHz	39Hz - 40kHz	
Low frequency point (-6dB)	40Hz	34Hz	
Crossover frequency	2,200Hz	270Hz / 2,200Hz	
Sensitivity (2.83V/1 m)	89dB	92dB	
Nominal impedance	8Ω (min 4Ω)	8Ω (min 3.2Ω)	
Recommended amplifier power	25 - 200W	50 - 600W	
Dimensions (HxWxD)	17 x 10½ x 16¾" (43.1 x 25.8 x 42.7cm)	37½ x 12½ x 20½" (94.2 x 32.2 x 51cm)	
Net weight (by unit)	44lbs (20kg)	125lbs (57kg)	
Finishes			



**VIVA/VIVA CENTER
UTOPIA COLOUR EVO**



**SUB UTOPIA EM
COLOUR EVO**

Subwoofer (see p.40)



**DIABLO UTOPIA
COLOUR EVO STAND**

Height: 24" (60cm)
Graphite Black finish



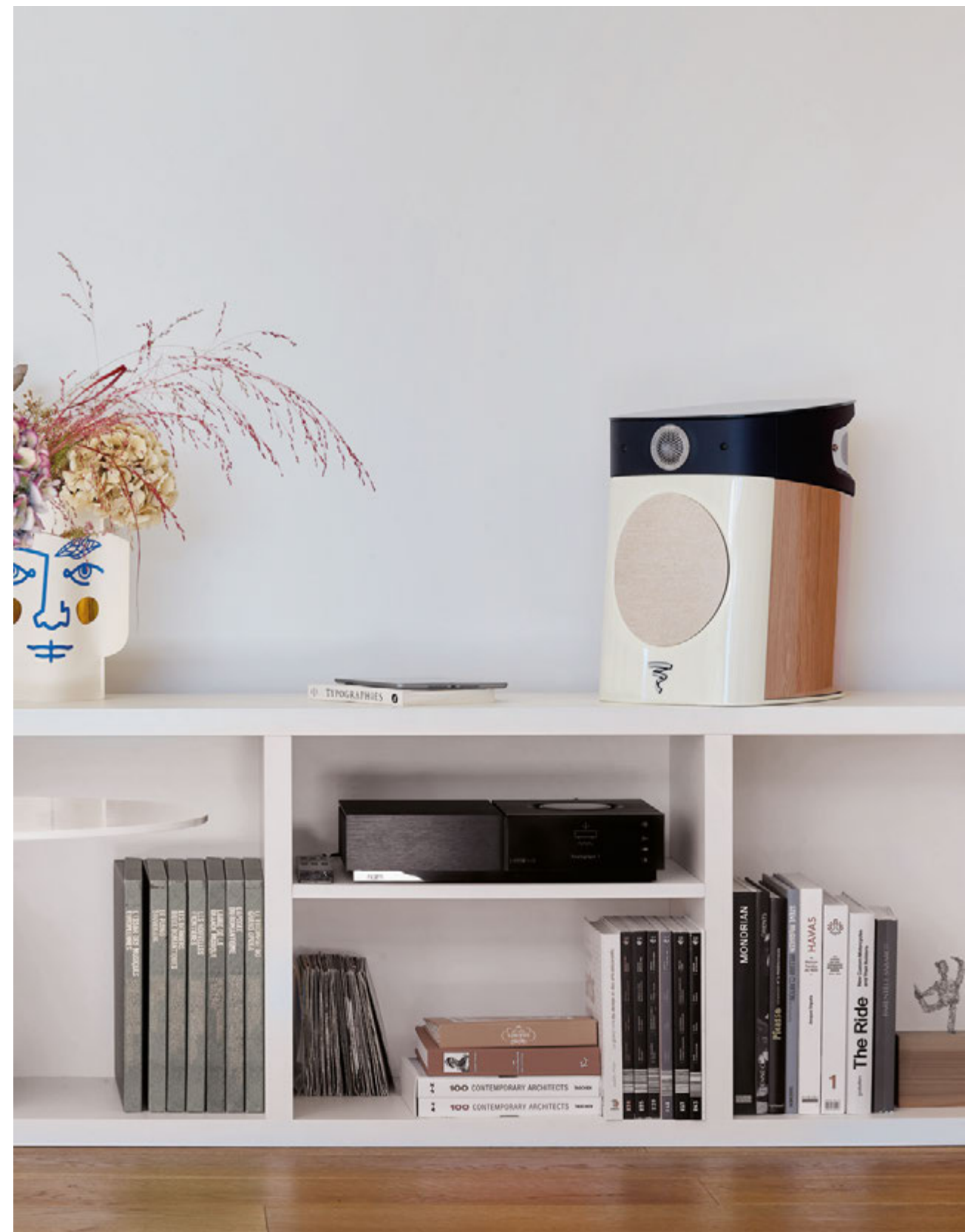
**VIVA / VIVA CENTER
UTOPIA COLOUR EVO STAND**

Height: 16" (40cm)
Graphite Black finish

02. SOPRA

Revealing the invisible

The Sopra range gloriously releases the essence of music: you will feel like you are listening to some sounds for the very first time. In addition to finishes in Carrara White, Black Lacquer and Electric range, Sopra N°1, N°2 and N°3 are also available in Light Oak and Black Oak, the wood having been meticulously crafted by our cabinet-makers in order to bring you unique pieces. Having total mastery over its available space, Sopra is a delight for aesthetes of form and sound.

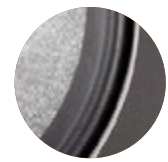




'W' sandwich cone



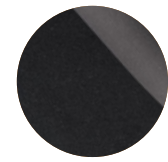
Pure Beryllium IHL tweeter



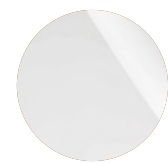
TMD® surround



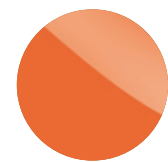
NIC technology



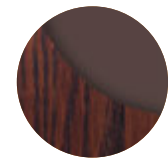
Black Lacquer



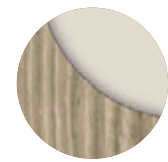
Carrara White



Electric Orange



Black Oak



Light Oak





SOPRA N°3

SOPRA N°2

SOPRA N°1

SOPRA CENTER

SOPRA SURROUND BE

SW 1000 BE

Type	3-way bass-reflex floorstanding loudspeaker	3-way bass-reflex floorstanding loudspeaker	2-way bass-reflex bookshelf loudspeaker
Drivers	<ul style="list-style-type: none"> • 2 x 8" (21cm) 'W' Woofer with NIC motor • 6½" (16.5cm) 'W' Midrange with TMD® suspension and NIC motor • 1" (27mm) IHL pure Beryllium inverted dome tweeter 	<ul style="list-style-type: none"> • 2 x 7" (18cm) 'W' Woofer with NIC motor • 6½" (16.5cm) 'W' Midrange with TMD® suspension and NIC motor • 1" (27mm) IHL pure Beryllium inverted dome tweeter 	<ul style="list-style-type: none"> • 6½" (16.5cm) 'W' Mid-Bass with TMD® suspension and NIC motor • 1" (27mm) IHL pure Beryllium inverted dome tweeter
Frequency response	33Hz - 40kHz	34Hz - 40kHz	45Hz - 40kHz
Low frequency point (-6dB)	26Hz	28Hz	41Hz
Crossover frequency	250Hz / 2,200Hz	250Hz / 2,200Hz	2,200Hz
Sensitivity (2.83V/1 m)	91,5dB	91dB	89dB
Nominal impedance	8Ω (min 3.1Ω)	8Ω (min 3.1Ω)	8Ω (min 3.9Ω)
Recommended amplifier power	40 - 400W	40 - 300W	25 - 150W
Dimensions (HxWxD)	49⅝ x 15¾ x 23⅝" (126.4 x 40.2 x 59.5cm)	46⅞ x 14⅞ x 21¼" (119 x 35.8 x 54cm)	16⅞ x 11 x 15¾" (42.5 x 27.9 x 39.6cm)
Net weight (by unit)	154lbs (70kg)	121lbs (55kg)	42lbs (19kg)
Finishes			

Type	3-way bass-reflex center loudspeaker	2-way sealed bipolar surround loudspeaker
Drivers	<ul style="list-style-type: none"> • 2 x 6½" (16.5cm) 'W' Woofers • 3" (8cm) 'W' Midrange • 1" (27mm) IHL pure Beryllium inverted dome tweeter 	<ul style="list-style-type: none"> • 2 x 6½" (16.5cm) 'W' Mid-Bass • 2 x 1" (27mm) IHL pure Beryllium inverted dome tweeter
Frequency response	55Hz - 40kHz	72Hz - 40kHz
Low frequency point (-6dB)	50Hz	59Hz
Crossover frequency	500Hz / 2,200Hz	2,400Hz
Sensitivity (2.83V/1 m)	91dB	91dB
Nominal impedance	8Ω (min 4.1Ω)	4Ω / 8Ω (min 3Ω / 6Ω (bipole/monopole))
Recommended amplifier power	40 - 200W	40 - 200W
Dimensions (HxWxD)	9¼ x 24 x 13¾" (23.5 x 60.9 x 35cm)	15⅜ x 16⅞ x 7½" (39 x 43 x 19cm)
Net weight (by unit)	121lbs (19kg)	28lbs (13kg)
Finishes		

Subwoofer (see p.40)



SOPRA STAND

Height: 24" (60cm)
Graphite Black finish

03.

KANTA

Performance meets style

Kanta is all about superb performance in an even more tightly controlled space. Precision, detail, warmth and musical sounding are its key sound characteristics. The range also stands out for its modern design and decidedly disruptive aesthetics. The front panels of its four models, in either a lacquered or a matte finish, offer various combination options to cater to all tastes and to suit diverse environments.





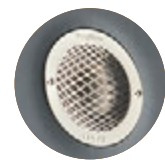
Flax cone



Focus Time



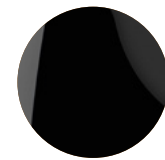
TMD® surround



Beryllium tweeter



Carrara White



Black Lacquer



Walnut High Gloss & Black Lacquer



Walnut Mate & Ivory



Walnut Mate & Dark Grey





KANTA N°3



KANTA N°2



KANTA N°1



KANTA CENTER



SUB 1000 F

Type	3-way bass-reflex floorstanding loudspeaker	3-way bass-reflex floorstanding loudspeaker	2-way bass-reflex bookshelf loudspeaker
Drivers	<ul style="list-style-type: none"> • 2 x 8" (21 cm) Flax bass with NIC motor • 6½" (16.5 cm) Flax Midrange with TMD® suspension and NIC motor • 1" (27mm) IAL3 pure Beryllium inverted dome tweeter 	<ul style="list-style-type: none"> • 2 x 6½" (16.5cm) Flax Woofer with NIC motor • 6½" (16.5cm) Flax Midrange with TMD® suspension and NIC motor • 1" (27mm) IAL3 pure Beryllium inverted dome tweeter 	<ul style="list-style-type: none"> • 6½" (16.5 cm) Flax Mid-Bass with TMD® suspension and NIC motor • 1" (27 mm) IAL3 pure Beryllium inverted dome tweeter
Frequency response	33Hz - 40kHz	35Hz - 40kHz	46Hz - 40kHz
Low frequency point (-6dB)	26Hz	29Hz	42Hz
Crossover frequency	250Hz / 2,500Hz	260Hz / 2,700Hz	2,400Hz
Sensitivity (2.83V/1 m)	91dB	91dB	88dB
Nominal impedance	8Ω (min 3Ω)	8Ω (min 3.1Ω)	8Ω (min 3.9Ω)
Recommended amplifier power	40 - 400W	40 - 300W	25 - 150W
Dimensions (HxWxD)	50¾ x 15¼ x 20½" (128 x 38.6 x 52cm)	44 x 12¾ x 18¾" (111.8 x 32.1 x 47.7cm)	16¾ x 9¼ x 15¾" (42.2 x 23.4 x 39cm)
Net weight (by unit)	101lbs (46kg)	77lbs (35kg)	29lbs (13kg)
Finishes			

Type	2-way bass-reflex center loudspeaker
Drivers	<ul style="list-style-type: none"> • 6½" (16.5 cm) Flax Mid-Bass with TMD® suspension and NIC motor • 1" (27 mm) IAL3 pure Beryllium inverted dome tweeter
Frequency response	55Hz - 40kHz
Low frequency point (-6dB)	50Hz
Crossover frequency	2,400Hz
Sensitivity (2.83V/1 m)	91dB
Nominal impedance	8Ω (min 3.5Ω)
Recommended amplifier power	40 - 200W
Dimensions (HxWxD)	9½ x 22 x 15¾" (24.6 x 56.1 x 39cm)
Net weight (by unit)	40lbs (18kg)
Finishes	

Subwoofer (see p.40)



KANTA N°1 STAND

Adjustable height from 24" to 25" (61,5 to 64,1cm)
Graphite Black finish



KANTA CENTER STAND

Adjustable height from 16.5" to 17.5" (42,4 to 45cm)
Graphite Black finish

04.

ARIA

High-Fidelity guaranteed

The harmonic richness of the Aria line is a guarantee of genuine high-fidelity musical sound. Exclusive to Focal, the Flax cone of each speaker driver is a treat for the eyes, as well as the ears. From the cabinet to its natural design, nothing is left to chance - ensuring you will always enjoy an expressive, balanced listening experience.

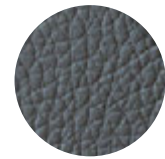




Flax cone



TNF Tweeter



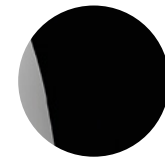
Leather effect front panel



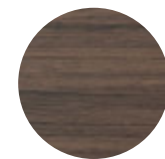
Front port



Aluminium alloy stand



Black High Gloss



Noyer Finish





ARIA 948



ARIA 936



ARIA 926

Type	3-way bass-reflex floorstanding loudspeaker	3-way bass-reflex floorstanding loudspeaker	3-way bass-reflex floorstanding loudspeaker
Drivers	<ul style="list-style-type: none"> • 2 x 8" (21cm) Flax Woofer • 6½" (16.5cm) Flax Midrange • 1" (25mm) TNF Al/Mg inverted dome tweeter 	<ul style="list-style-type: none"> • 3 x 6½" (16.5cm) Flax Woofer • 6½" (16.5cm) Flax Midrange • 1" (25mm) TNF Al/Mg inverted dome tweeter 	<ul style="list-style-type: none"> • 2 x 6½" (16.5cm) Flax bass • 6½" (16.5cm) Flax Midrange • 1" (25mm) TNF Al/Mg inverted dome tweeter
Frequency response	37Hz - 28kHz	39Hz - 28kHz	45Hz - 28kHz
Low frequency point (-6dB)	31Hz	32Hz	37Hz
Crossover frequency	280Hz / 2,600Hz	260Hz / 3,100Hz	290Hz / 2,400Hz
Sensitivity (2.83V/1 m)	92.5dB	92dB	91.5dB
Nominal impedance	8Ω (min 2.5Ω)	8Ω (min 2.8Ω)	8Ω (min 2.9Ω)
Recommended amplifier power	40 - 350W	40 - 300W	40 - 250W
Dimensions (HxWxD)	45¼ x 14¾ x 16¾" (115 x 37.1 x 42cm)	45¼ x 11½ x 14¾" (115 x 29.4 x 37.1cm)	40¾ x 11½ x 14¾" (103.5 x 29.4 x 37.1cm)
Net weight (by unit)	77lbs (35kg)	64lbs (29kg)	55lbs (25kg)
Finishes			



ARIA 906



ARIA CC 900



ARIA SR 900

Type	2-way bass-reflex bookshelf loudspeaker	2-way bass-reflex center loudspeaker	2-way sealed bipolar surround loudspeaker
Drivers	<ul style="list-style-type: none"> • 6½" (16.5cm) Flax Mid-Bass • 1" (25mm) TNF Al/Mg inverted dome tweeter 	<ul style="list-style-type: none"> • 2 x 6½" (16.5cm) Flax Mid-Bass • 1" (25mm) TNF Al/Mg inverted dome tweeter 	<ul style="list-style-type: none"> • 2 x 5" (13cm) Flax Mid-Bass • 2 x 1" (25mm) TNF Al/Mg inverted dome tweeter
Frequency response	55Hz - 28kHz	57Hz - 28kHz	85Hz - 28Hz
Low frequency point (-6dB)	47Hz	50Hz	67Hz
Crossover frequency	2,800Hz	2,800Hz	2,200Hz
Sensitivity (2.83V/1 m)	89.5dB	91dB	90dB
Nominal impedance	8Ω (min 4.6Ω)	8Ω (min 4.3Ω)	8Ω (min 3.6Ω)
Recommended amplifier power	25 - 120W	40 - 200W	25 - 120W
Dimensions (HxWxD)	15¾ x 8¾ x 11" (39 x 22.5 x 28cm)	7¾ x 21 x 9¾" (20 x 53.3 x 24.5cm)	11½ x 15¾ x 6" (29.5 x 40 x 17cm)
Net weight (by unit)	19lbs (8.5kg)	23lbs (10.5kg)	12lbs (6kg)
Finishes			



SUB 1000 F

Subwoofer (see p.40)

1 299 €



S900 STAND

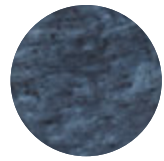
Aria 906 compatible
Height: 24" (60cm)
Aluminium finish

05. CHORA

Step into High-Fidelity

Chora is proof that the manufacturing of affordable products in France does not mean skimping on listening quality or the choice of a sophisticated style signature. Equipped with the slatefiber cone - a Focal technology that delivers a unique 'slate' effect - these melodious, must-have loudspeakers combine performance and design as a first foray into the High-Fidelity and Home Cinema universe.





Slatefiber
cone



Al/Mg TNF
Tweeter



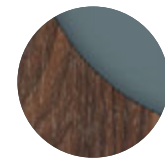
Dolby Atmos®
effects



Black
finish



Light Wood
finish



Dark Wood
finish





CHORA 826-D **CHORA 826** **CHORA 816** **CHORA 806**

Type	3-way bass-reflex floorstanding loudspeaker - 1-way sealed	3-way bass reflex floorstanding loudspeaker	2.5-way bass reflex floorstanding loudspeaker	2-way bass reflex bookshelf loudspeaker
Drivers	<ul style="list-style-type: none"> • 2 x 6½" (16.5cm) Slatefiber Woofer • 6½" (16.5cm) Slatefiber Midrange • 1" (25mm) TNF Al/Mg inverted dome tweeter 	<ul style="list-style-type: none"> • 2 x 6½" (16.5cm) Slatefiber Woofer • 6½" (16.5cm) Slatefiber Midrange • 1" (25mm) TNF Al/Mg inverted dome tweeter 	<ul style="list-style-type: none"> • 6½" (16.5cm) Slatefiber Woofer • 6½" (16.5cm) Slatefiber Midrange • 1" (25mm) TNF Al/Mg inverted dome tweeter 	<ul style="list-style-type: none"> • 6½" (16.5cm) Slatefiber Mid-Bass • 1" (25mm) TNF Al/Mg inverted dome tweeter
Frequency response	48Hz - 28kHz Atmos: 100Hz - 20kHz	48Hz - 28kHz	50Hz - 28kHz	58Hz - 28kHz
Low frequency point (-6dB)	39Hz Atmos: 90Hz	39Hz	45Hz	49Hz
Crossover frequency	270Hz / 2,700Hz	270Hz / 2,700Hz	270Hz / 2,700Hz	3,000Hz
Sensitivity (2.83V/1 m)	91dB	91dB	89.5dB	89dB
Nominal impedance	8Ω (min 2.9Ω) Atmos: 6Ω	8Ω (min 2.9Ω)	8Ω (min 4Ω)	8Ω (min 4.6Ω)
Recommended amplifier power	40 - 250W	40 - 250W	40 - 200W	25 - 120W
Dimensions (HxWxD)	41½ x 12 x 15¼" (105 x 30 x 39cm)	41½ x 12 x 15¼" (105 x 30 x 39cm)	40¼ x 12 x 15¼" (102 x 30 x 39cm)	17 x 8¼ x 10⅝" (43 x 21 x 27cm)
Net weight (by unit)	49lbs (22kg)	47lbs (21kg)	41lbs (18.5kg)	16lbs (7.5kg)
Finishes				



CHORA CENTER **CHORA SURROUND** **SUB 600P**

Type	2-way sealed center loudspeaker	2-way sealed surround loudspeaker	Subwoofer (see p.40)
Drivers	<ul style="list-style-type: none"> • 2x 6½" (16.5cm) Slatefiber Mid-Bass • 1" (25mm) TNF Al/Mg inverted dome tweeter 	<ul style="list-style-type: none"> • 2x 6½" (16.5cm) Slatefiber Mid-Bass • 1" (25mm) TNF Al/Mg inverted dome tweeter 	
Frequency response	59Hz - 28kHz	80Hz - 28kHz	
Low frequency point (-6dB)	51Hz	67Hz	
Crossover frequency	2,100Hz	3,000Hz	
Sensitivity (2.83V/1 m)	91dB	89dB	
Nominal impedance	8Ω (min 3.8Ω)	8Ω (min 4.5Ω)	
Recommended amplifier power	40 - 200W	25 - 100W	
Dimensions (HxWxD)	8¼ x 20⅞ x 10" (21 x 53 x 25cm)	17½ x 4 x 12⅝" (44.5 x 10 x 32cm)	
Net weight (by unit)	20lbs (9kg)	12lbs (5.5kg)	
Finishes			



CHORA 806 STAND **CHORA CENTER STAND**
 Height: 21¾ (55cm) Black finish Height: 17¾ (45cm) Black finish

06.

SUBWOOFERS

Dynamics, impact and power

The subwoofer is a major component of any audio installation, providing dynamics and intensity. With their seductive design, Focal subwoofers offer deep, impactful and powerful bass. They effectively complement a wide range of audio set-ups, from the ultimate Home Cinema installations to the most compact hi-fi systems.





**SUB UTOPIA EM
COLOUR EVO**



SW 1000 BE

Type	Stackable passive subwoofer	Active bass-reflex subwoofer						
Drivers	<ul style="list-style-type: none"> • Electro-Magnetic 13" (33cm) 'W' bass driver • Stackable (up to 3 subwoofers tall) • Almost 130dB SPL at 1m (in a corner) 	13" (33cm) 'W' woofer						
Frequency response	22Hz - 500Hz	20Hz - 150Hz						
Low frequency point (-6dB)	19Hz	18Hz						
Functions	<table border="1"> <tr> <td>Sensitivity (2.83V/1m)</td> <td>93dB</td> </tr> <tr> <td>Nominal impedance</td> <td>8Ω 8Ω (min 5.5Ω)</td> </tr> <tr> <td>Recommended amplifier power</td> <td>500 - 1.000W</td> </tr> </table>	Sensitivity (2.83V/1m)	93dB	Nominal impedance	8Ω 8Ω (min 5.5Ω)	Recommended amplifier power	500 - 1.000W	<ul style="list-style-type: none"> • LFE/Stereo/Digital inputs • Adjustable LPF: 50Hz to 150Hz (24dB/oct.), 48dB/oct. • Adjustable subsonic filter • 3 user memories • Night mode and Boost mode • Autopower
Sensitivity (2.83V/1m)	93dB							
Nominal impedance	8Ω 8Ω (min 5.5Ω)							
Recommended amplifier power	500 - 1.000W							
Amplifier power	-	600W BASH® amplifier						
Dimensions (HxWxD)	24¾ x 19 x 24¾" (63 x 48 x 62cm)	21 x 19¾ x 16 ^{7/8} " (53.5 x 50 x 43cm)						
Net weight (by unit)	159lbs (72kg)	92lbs (42kg)						
Finishes								



SUB 1000F



SUB 600P

Type	Active sealed subwoofer	Active closed subwoofer
Drivers	12" (30cm) Flax woofer	12" (30cm) Polyflex woofer
Frequency response	24Hz - 160Hz	28Hz - 270Hz
Low frequency point (-6dB)	22Hz	26Hz
Functions	<ul style="list-style-type: none"> • LFE/Stereo inputs • Adjustable subsonic filter: 40Hz to 160Hz/12dB/Oct • Phase inverter: 0 - 180° • Autopower 	<ul style="list-style-type: none"> • RCA input: Right, left, LFE • Crossover Frequency: Variable 40Hz - 200Hz (LFE) • Phase inverter: 0 - 180° • AutoStandby enable / disable
Amplifier power	1000W BASH® amplifier	600W Dynamic 300W RMS
Dimensions (HxWxD)	16½ x 15¾ x 16½" (42 x 40 x 42cm)	15¾ x 15¾ x 16¾" (40 x 40 x 42.5cm)
Net weight (by unit)	47lbs (21.5kg)	46lbs (21kg)
Finishes		

07.

ASTRAL 16

Sound immersion

Astral 16 is a 16-channel audio-video processor and amplifier that allows you to get the best from your loudspeakers. Compatible with Control4, Crestron, Savant and RTI, this cutting-edge electronic device incorporates 12 class-D amplifier channels and handles all audio formats (DolbyAtmos®, DTS:X™ etc.). You can control whichever system you want by room via a simple app, enjoy access to technical support at any time and customise your system as desired.

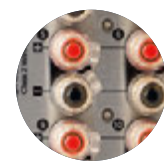




Audio-video processor



Upgradable product



12 x 250W RMS



Home Cinema & Multiroom



Dolby Atmos®
DTSX® - Auro 3D®



Dirac Live acoustics correction





ASTRAL 16

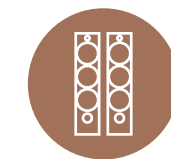
Type	16 channel audio-video processor and amplifier	
Main features	• Compatible formats	Dolby Atmos [*] / DTS:X™ / Auro-3D [*]
	• Compatible formats	Powered by Dirac Live [®] : target curve editable from 20Hz to 20kHz for all channels (including subwoofers), phase correction full bandwidth 20Hz - 20kHz on all channels (including subwoofers)
	• 'Remote Monitoring' function	
Multichannel / Surround Processing	• Output channels	16
	• Decoding / upmixing channels	Up to 16 channels
	• Input sampling rate supported	Up to 192kHz
	• Stereo downmix	
	• Bass management	Fully flexible
• Multi-subwoofer channels	Unlimited	
• Multi-way crossover	(6-12-18-24-36-48dB/oct)	
• 20 Parametric EQ per channel		
HDMI	• HDMI inputs	7 : HDMI 2.0 / HDCP 2.2
	• HDMI outputs (mirror)	1 : HDMI 2.0 / HDCP 2.2 (with eARC) 2 : HDMI 2.0 / HDCP 2.2
	• Supported video format	up to 4K UHD
	• High Dynamic Range	HDR10 / HLG
	• Color Space and Subsampling	4:4:4, 4:2:2, 4:2:0
	• Deep Color	12 bpc
	• Max resolution supported	4K 60fps 4:4:4 8bpc
• HDMI	3D / 4K / eARC	
Audio Inputs	• Digital input	3 x coaxial, 3 x optical
	• Analog stereo inputs	4 x RCA inputs
Amplified Audio Outputs	• Amplified main outputs	12
	• Analog main outputs, balanced	4 x XLR
	• Stereo downmix outputs, balanced	2 x XLR
	• Technology	Class D
	• Amplified channels	12
	• Continuous power output, per channel, to 0.1%THD	8Ω / 4Ω / 2.7Ω
	• 3 channels driven simultaneous	200W / 400W / 650W
• 6 channels driven simultaneous	200W / 350W / 350W	
• 12 channels driven simultaneous	200W / 300W	

Set-Up Management	<ul style="list-style-type: none"> • Configurable multi-theater management • Configurable audio zones management • Unlimited Theater and audio zones listening presets • Backup and restore of set-up • Firmware update via USB/network 	
Control Inputs and Outputs	• USB type A	2
	• Ethernet	
	• Trigger	4 (out)
	• IR remote ports, in/out	1 / 1
Control and custom Installation	<ul style="list-style-type: none"> • Web-based product configurator • TCP/IP API based control • Focal Remote iPad[®] control application • Home automation • Front panel display 	
		Control4, Crestron, RTI and Savant TFT 4.3"
	Power Supply	<ul style="list-style-type: none"> • Voltage range • Type • Range selection
		100V to 240V SMPS Universal
Supplied with	<ul style="list-style-type: none"> • Calibrated measurement microphone and tripod • Dirac Live[®] license • 32.9ft (10m) cable with infra-red detector • Mounting kit 	
Dimensions avec stands (HxWxD)	7½ x 18⅞ x 19¼" (19.1 x 47.9 x 49cm)	
Weight	Weight net with stands	44.1lbs (20kg)
	Weight net with accessories for Rack (kg/lbs)	50.7lbs (23 kg)

FOCAL & NAIM

Complete systems

With Focal and Naim's complementary products, you can enjoy complete solutions. Our loudspeakers are designed to reveal a pure sound, the embodiment of the spirit of High Fidelity. Our all-in-one systems allow you to take full advantage of the loudspeakers' performance, and are a simple and smart way of managing your music from a single source: access integrated streaming services, (Spotify, Tidal, Qobuz, etc.), improve the sound of your TV, and enjoy your CDs and radio stations and more.



Focal
loudspeakers



Uniti music-streaming
system



Matching
cables

CHORA 806
UNITI ATOM



CHORA 826
UNITI ATOM



ARIA 926
UNITI STAR



KANTA N°1
UNITI STAR



KANTA N°2
UNITI NOVA





UTOPIA



'Musically, audiophiles could not ask for anything more than the Grande'

AUDIOPHILIA

'The Stellas are really bespoke loudspeakers, and to me, musical works of art'

tone publications



'With all that grace, power, and finesse on tap, when it comes to music the Maestro is a genuinely do it all performer'

HIFI PLUS



SOPRA



'The Sopra N°2 is literally and figuratively an impressive loudspeaker'

THE EARNET



'It's difficult to live without it'

SOUND STAGE HIFI



KANTA



'The Focal Kanta N°3 delivers terrific sound quality and a stylish design for its price'

WHAT HI-FI

'Tonally, the Focal is absolutely magnificent'

AV FORUMS





ARIA



'The sound quality offered for the price is excellent'

THE EAR NET



'It offers superb tonality, a wonderful soundstage and it is built like a Swiss watch'

AV FORUMS



CHORA



'A supremely talented speaker that delivers an exceptional level of performance'

HIFICHOICE

'Focal's 5.1.4 Chora system delivers impressive performance for the price and is equally adept at movies and music'

SOUND AND VISION



ASTRAL 16



'An experience that was spine-tingling'

HOME CINEMA CHOICE

'This is high-end hardware fit for the finest of setups'

AVTECH MEDIA



COLLECTIONS

Combining performance and design, Focal's collections are a revelation, awakening the emotions through a supreme listening experience. And it doesn't matter where you are. At home with traditional and in-wall / in-ceiling loudspeakers, Home Cinema systems and open-back headphones; on the go with closed-back headphones and in-car kits; in the studio with professional monitors; and even at sea with specialist yacht solutions.



Home Collection



Motorities Collection



Professional Collection

FOCAL *Powered by* naim

Enjoy an incredible sound experience

Find our products in 10,000 retail partner stores across the world, but also in our Focal Powered by Naim shops. These shops, dedicated to our brands, invite you to dive into our world, our savoir-faire and immerse yourself in the Focal & Naim sound.

AUSTRALIA
Adelaide - Melbourne -
Perth - Sydney

CHINA
Guangzhou

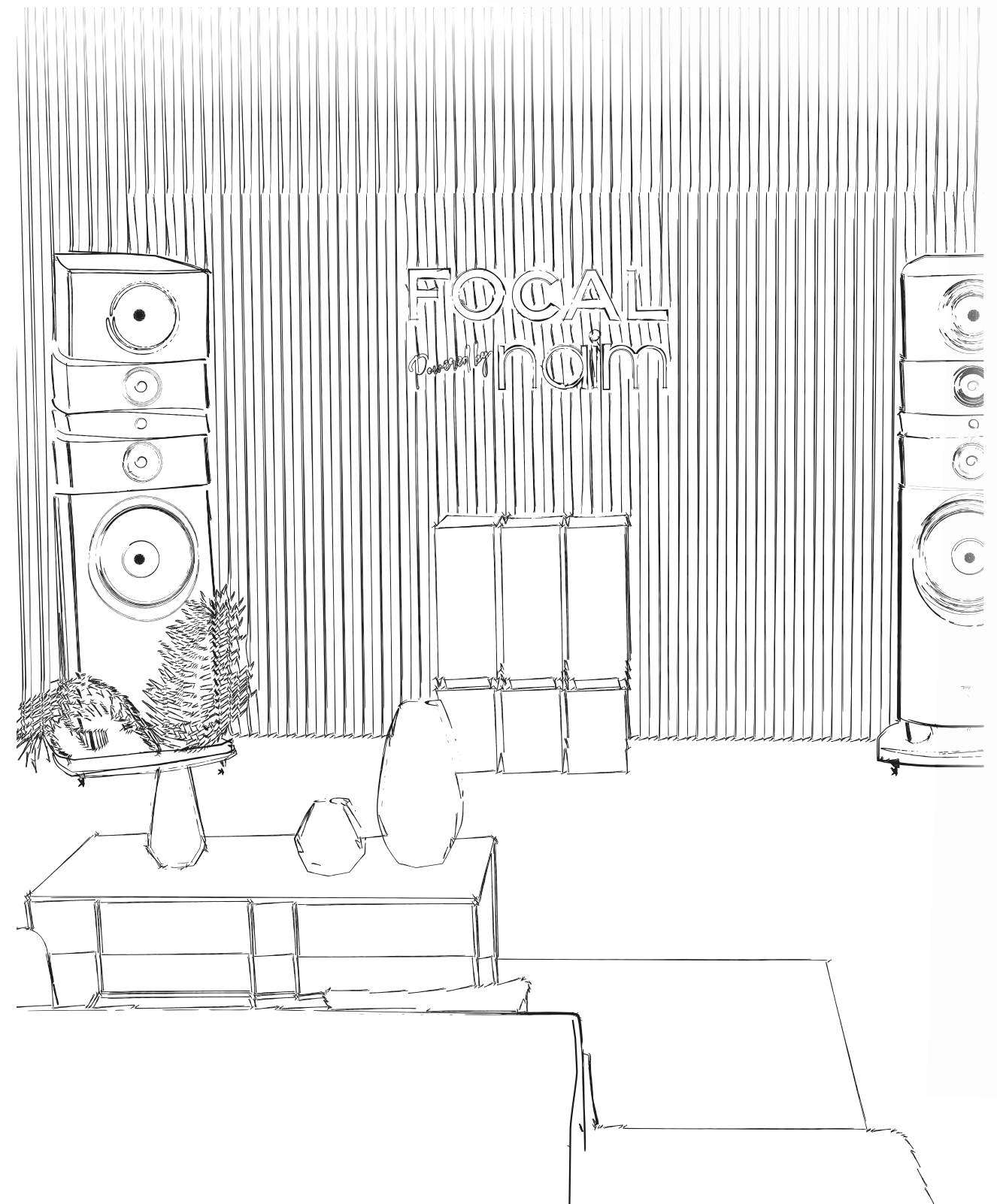
CZECH REPUBLIC
Prague

FRANCE
Cannes - Lyon - Perpignan

GERMANY
Berlin

SOUTH KOREA
Seoul Gangnam-gu -
Seoul Hanam

USA
Dallas - Houston - Miami





For more information, scan the QR code
or find us at:

www.focal.com



Focal JMLab®

BP 374 - 108, rue de l'Avenir - 42353 La Talaudière cedex - France - +33 (0) 477 435 700

Focal® is a registered trademark of Focal JMLab®, Naim® is a registered trademark of Naim Audio®.
Due to constant technological advances, Focal JMLab® and Naim Audio® reserve the right to modify prices and specifications without notice.
Non-binding pictures. Pictures : L'Atelier Sylvain Madelon / Envato Elements. SCAA/30/06/2021 - v1

